

Foot Plates

for Grub Screws DIN 6332 /
for Tommy Screws DIN 6304 / DIN 6306, Steel

SPECIFICATION

Types

- Type **N**: Without plastic cap
- Type **G**: With plastic cap, gliding
- Type **R**: With plastic cap, non-gliding

Foot plate

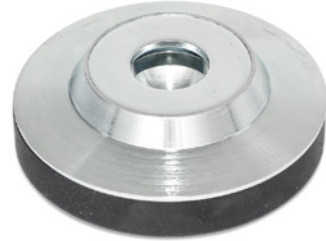
Steel zinc plated, blue passivated

Retaining spring

Stainless steel AISI 301

Plastic caps

- Type G
Technopolymer (Polyacetal POM)
Cream RAL 9001
- Type R
Elastomer (TPE)
Hardness \approx 75 Shore A
Black



INFORMATION

Foot plates GN 6311.3 are used in connection with screws with pivots (grub screws DIN 6332 (see page 912), tommy screws DIN 6304 (see page 407), DIN 6306 (see page 409)) for installing and leveling devices and mechanisms.

Owing to the special shape of immovable retaining spring, the foot plate is easily plugged onto and removed from the pivot.

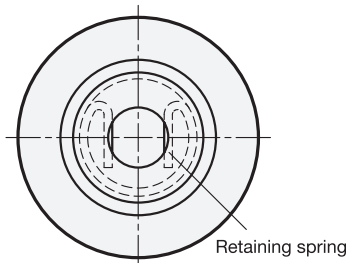
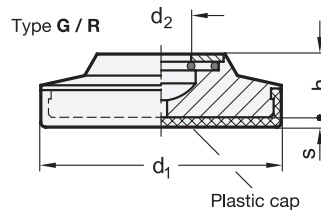
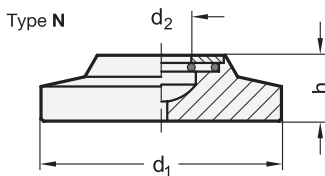
The types G and R with plastic cap prevent damage to sensitive surfaces. Due to the large plate diameter d_1 , the contact pressure remains within tolerable limits.

ACCESSORY

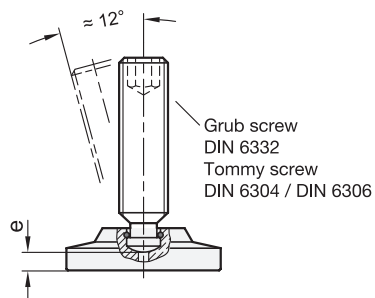
- Grub Screws DIN 6332 (see page 912)
- Tommy Screws DIN 6304 (see page 407)
- Tommy Screws DIN 6306 (see page 409)

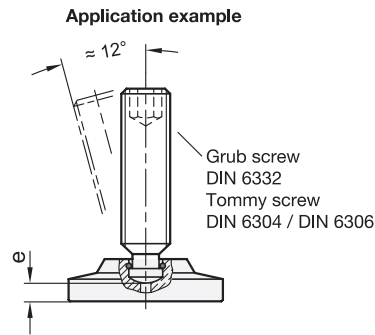
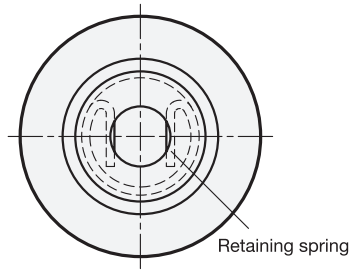
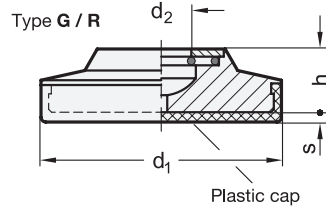
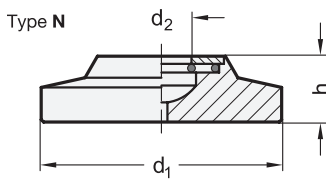
TECHNICAL INFORMATION

- Plastic Characteristics (see page A2)
- Stainless Steel Characteristics (see page A26)



Application example





GN 6311.3-N

Description	d ₁	h	d ₂ +0.2	e ≈	suitable for grub screw DIN 6332	⚖
GN 6311.3-50-11,5-N	50	11.5	9.2	3.7	M 12	133
GN 6311.3-50-13,5-N	50	13.5	12.5	4	M 16	140
GN 6311.3-60-13,5-N	60	13.5	12.5	4	M 16	227
GN 6311.3-60-15,5-N	60	15.5	16.5	4.3	M 20	237
GN 6311.3-80-18-N	80	18	12.5	8	M 16	459
GN 6311.3-80-20-N	80	20	16.5	8.3	M 20	476
GN 6311.3-100-20-N	100	20	12.5	11	M 16	823
GN 6311.3-100-22-N	100	22	16.5	11.3	M 20	839

GN 6311.3-G

Description	d ₁	h	d ₂ +0.2	e ≈	s	suitable for grub screw DIN 6332	⚖
GN 6311.3-50-11,5-G	50	11.5	9.2	3.7	2	M 12	126
GN 6311.3-50-13,5-G	50	13.5	12.5	4	2	M 16	133
GN 6311.3-60-13,5-G	60	13.5	12.5	4	2	M 16	217
GN 6311.3-60-15,5-G	60	15.5	16.5	4.3	2	M 20	227

GN 6311.3-R

Description	d ₁	h	d ₂ +0.2	e ≈	s	suitable for grub screw DIN 6332	⚖
GN 6311.3-50-11,5-R	50	11.5	9.2	3.7	2	M 12	114
GN 6311.3-50-13,5-R	50	13.5	12.5	4	2	M 16	122
GN 6311.3-60-13,5-R	60	13.5	12.5	4	2	M 16	197
GN 6311.3-60-15,5-R	60	15.5	16.5	4.3	2	M 20	207
GN 6311.3-80-18-R	80	18	12.5	8	2.5	M 16	422
GN 6311.3-80-20-R	80	20	16.5	8.3	2.5	M 20	438
GN 6311.3-100-20-R	100	20	12.5	11	3	M 16	773
GN 6311.3-100-22-R	100	22	16.5	11.3	3	M 20	787

